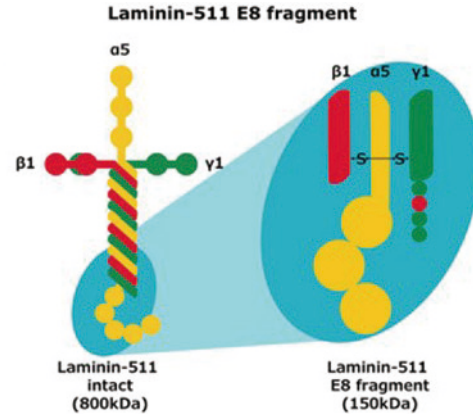


# 特別介紹 ECMatrix™ Laminin Substrates

## 專為Xeno-free & Feeder-free Human Pluripotent Stem Cell Cultures 設計

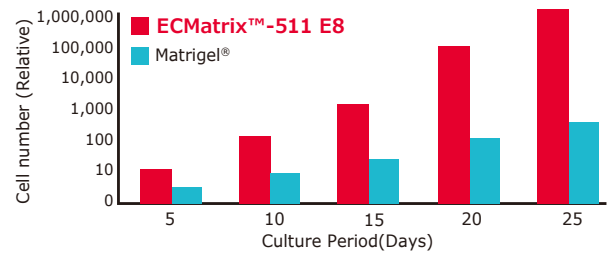
ECMatrix™-511 E8 是由 Kiyotoshi Sekiguchi's lab (Matrixome, Inc.) 所研發的重組人類 laminin-511 片段，適用於培養人類全能幹細胞（如ES以及iPSC）。相較於從動物取得的 ECM，或是一般常用的重組型 ECM 蛋白成分如 vitronectin，ECMatrix™-511 E8 不僅培養效能優異，操作方便性也大大提升。



### 訂購資訊

Description	Recommended Cell Type	Part Number
ECMatrix™-511 E8 Laminin Substrate	Human ES/iPS Cells	CC160-350UG
	Human ES/iPS Cells	CC160-1050UG
	Human ES/iPS Cells	CC160-100ML
ECMatrix™-511 Silk E8 Laminin Substrate	Human ES/iPS Cells	CC161-1050UG
	Human ES/iPS Cells	CC161-100ML
ECMatrix™-411 E8 Laminin Substrate	Endothelial Progenitors	CC162-350UG
	Endothelial Progenitors	CC162-1050UG
ECMatrix™-221 E8 Laminin Substrate	Cardiomyocytes	CC163-350UG
	Cardiomyocytes	CC163-1050UG
Stem Cell Qualified ECM Gel Matrix	Human ES/iPS Cells	CC131-5ML
	Human ES/iPS Cells	CC131-10X5ML
PluriSTEM™-XF™ Recombinant Vitronectin	Human ES/iPS Cells	CC130
ECM Gel Matrix	3D Culture/ Cancer Stem Cell	E1270-10ML

### Human iPSC Growth on Various Substrates



Human iPSCs 培養於 ECMatrix™-511 E8 Laminin Substrates 上，細胞數比在 Matrigel® basement membrane extract 的環境中多 200 倍以上。

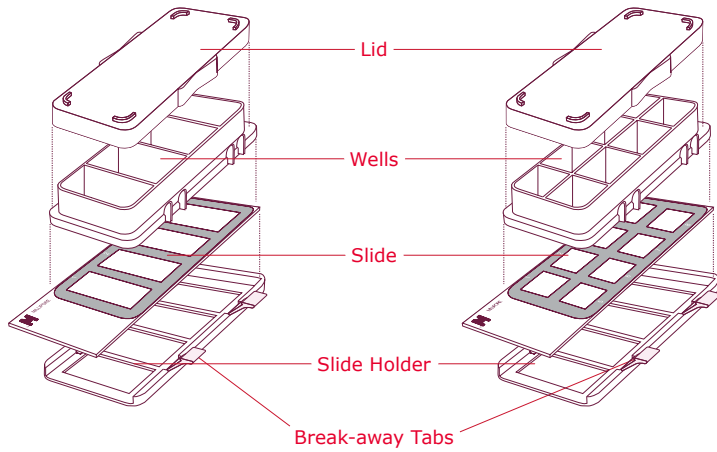
## POPULAR EXTRACELLULAR MATRIX

Collagen			
種類	產品型號	文獻使用細胞種類	研究領域
Collagen, Type I	<b>C7661, 08-115</b>	Myoblasts, spinal ganglia, hepatocytes, embryonic lung, heart explants, fibroblasts, endothelial cells, and islet cells	Basic research, angiogenesis, neurobiology, endocrinology,
Collagen, Type II	<b>C9301</b>	Chondrocytes, epithelial cells	Basic research
Collagen, Type IV	<b>C5533</b>	Epithelial cells, endothelial cells, muscle cells and nerve cells	Basic research, angiogenesis, neurobiology
Elastin			
種類	產品型號	文獻使用細胞種類	研究領域
Elastin	<b>E1625</b>	Epithelial cells, endothelial cells and cardiomyocytes	Cancer research, angiogenesis, regenerative medicine
Fibronectin			
種類	產品型號	文獻使用細胞種類	研究領域
Fibronectin	<b>F0895, F4759</b>	Epithelial cells, mesenchymal cells, neuronal cells, fibroblasts cells and endothelial cells	Cancer research, Regenerative medicine and endocrinology
Vitronectin			
種類	產品型號	文獻使用細胞種類	研究領域
Vitronectins	<b>V0132, 08-126</b>	Platelets, endothelial cells, stem cells, melanoma and osteosarcoma	Cancer research, Angiogenesis, regenerative medicine, coagulation studies

# Millicell® EZ SLIDE

Streamline your cell analysis workflow.

Use the Millicell® EZ SLIDE to culture, fix, stain and view your cells all in one device. No need to tediously move cover slips from your culture dish to a slide.



Visualize through the top of the lid  
Stackable, saves space in the incubator



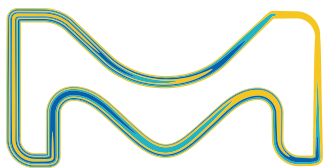
## Features

- Breakable tabs for easy well removal
- No tools required to remove wells from slide
- No adhesive used to attach wells to slide
- No leaky wells
- Polypropylene wells allow for fixing and staining with wells still attached
- Slide holder protects slide from damage during incubation and staining

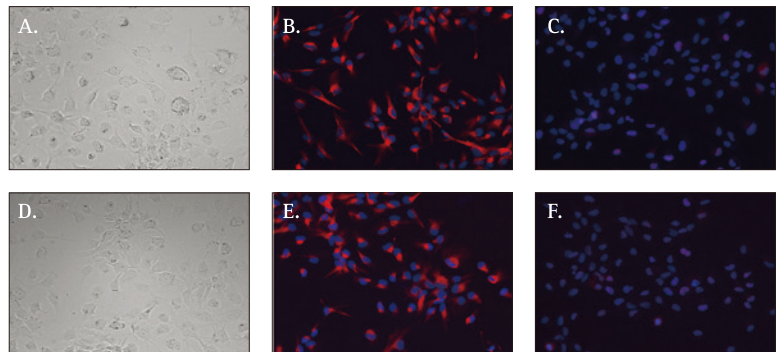
## Ordering Information

Description	Qty/Pk	Cat. No.
Millicell® EZ slide (4-well glass)	16	PEZGS0416
	96	PEZGS0496
Millicell® EZ slide (8-well glass)	16	PEZGS0816
	96	PEZGS0896

Ask us about specials and custom orders!  
8-well samples also available. Contact your local sales representative for more information.



Simplify and improve your analysis of cell lines and neural stem cells with Millicell® EZ slide.



ReNcell CX cells cultured on Millicell® 8-well glass EZ slides (A, B, C) and Brand B 8-well glass chambered slides (D, E, F). Cells show staining for nestin (red, B and E) and Sox-2 (red, C and F). Nuclei (blue) are stained with DAPI.