

Cytokine 分析 & SARS-CoV-2偵測

ProcartaPlex Immunoassays

產品特色

- **多重偵測技術** 可同時定量100種蛋白質的表現
- **物種多** Human、Mouse、Rat、Porcine、Canine、Non Human Primate
- **結省珍貴檢體** 只需 25ul。Serum、Plasma、Cell culture supernatant、Cell & tissue lysate 皆適用
- **省荷包** 偵測標的物越多越划算
- **靈敏度高** pg/ml sensitivity
- **產品選擇彈性化** Panel可互相搭配，也提供全客製化組合



更多ProcartaPlex panel 請見

ProcartaPlex human panels

熱賣

Th1/Th2 Cytokine 11-Plex Human ProcartaPlex Human Panel			
Cat. No. EPX110-10810-901			
GM-CSF	IL-2	IL-6	IL-18
IFN-gamma	IL-4	IL-12 p70	TNF-alpha
IL-1 beta	IL-5	IL-13	
Th9/Th17/Th22/Treg Cytokine 7-Plex Human ProcartaPlex Panel			
Cat. No. EPX070-10817-901			
IL-9	IL-17A	IL-22	IL-27
IL-10	IL-21	IL-23	
Cytokine 7-Plex Human ProcartaPlex Panel 1C			
Cat. No. EPX070-10010-901			
IFN-alpha	IL-1RA	IL-15	TNF-beta (LTA)
IL-1 alpha	IL-7	IL-31	

ProcartaPlex human panel for immuno-oncology

Immuno-Oncology Checkpoint 14-Plex Human ProcartaPlex Panel 1			
Cat. No. EPX14A-15803-901			
BTLA	LAG-3	TIM-3	CD27
GITR	PD1	CD28	CD152 (CTLA4)
HVEM	PD-L1	CD80	
IDO	PD-L2	4-1BB (CD137)	
Immuno-Oncology Checkpoint 14-Plex Human ProcartaPlex Panel 2			
Cat. No. EPX140-15815-901			
MICA	Perforin	ULBP-1,	Arginase-1
MICB	PVR	ULBP-3	ULBP-4
Nectin-2	Siglec-7	Tactile	
NT5E	Siglec-9	E-Cadherin	
Immuno-Oncology Checkpoint 9-Plex Human ProcartaPlex Panel 3			
Cat. No. EPX090-15820-901			
B7-H6	CD276 (B7-H3)	CD47 (IAP)	CD48 (BLAST-1)
TIMD-4	CD134 (OX40)	S100A8/A9	VISTA (B7-H5)
ICOS Ligand (B7-H2)			

Luminex



ProcartaPlex SARS-CoV-2 panels

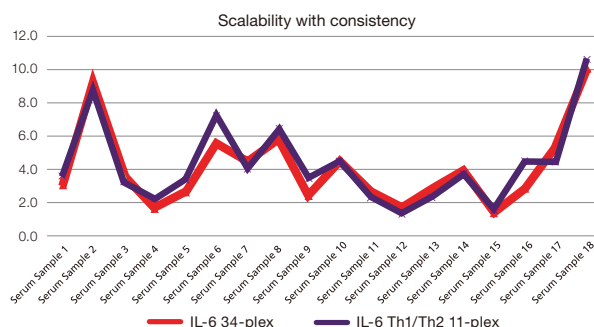
推薦

Coronavirus Ig Total Human 11-Plex ProcartaPlex™ Panel				
Cat. No. EPX110-16000-901				
SARS-CoV-2 Spike (trimer)			SARS-CoV-2 S1 protein	
SARS-CoV-2 RBD (IAP)			SARS-CoV-2 Nucleocapsid	
SARS S1	CoV-NL63	CoV-HKU1	CoV-229E	
MERS S1	CoV-OC43	Negative control		
Human SARS-CoV-2 Variants Neutralizing Ab 5-plex Panel				
Cat. No. EPX050-16017-901				
S1 wild type	UK (alpha)	SA (beta)	Brazil (gamma)	B.1.617.2 (δ)
SARS-CoV-2 Ig Total Simplex Panel				
Cat. No. EPX010-16012-901		Spike UK (B.1.1.7) (alpha)		
Cat. No. EPX010-16013-901		Spike SA (B.1.351) (beta)		
Cat. No. EPX010-16014-901		Spike Brazil (P.1) (gamma)		
Cat. No. EPX010-16016-901		Spike Delta (B.1.617.2)		

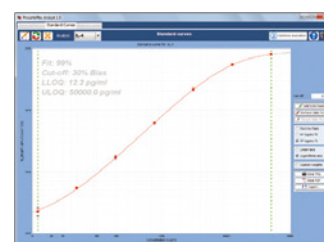


進階提供專業代檢服務

- ✓ 經驗豐富代檢技術
- ✓ 節省您寶貴的時間
- ✓ 輕鬆取得優質數據
- ✓ 省去人員技術訓練



Heat map analysis



Five-parameter curve fit