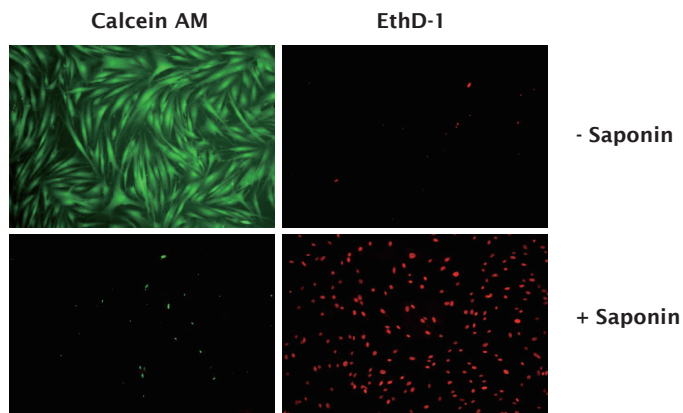


CytoSelect™ Cell Viability and Cytotoxicity Assay (Live/Dead Cells)

利用偵測細胞代謝活性的方式快速分析存活率

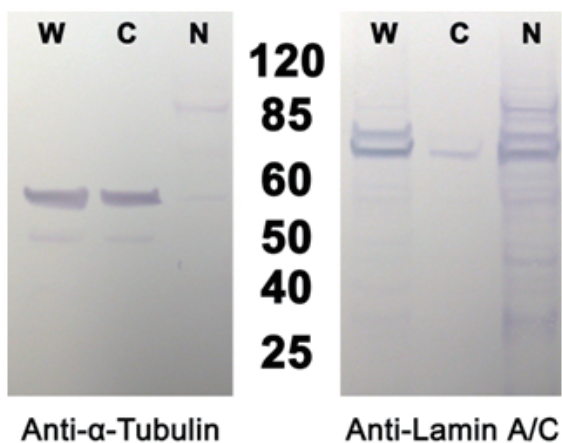
- ✓ 適用eukaryotic cell
- ✓ 包含螢光及可見光兩種染劑
Live cell : Calcein AM 、 MTT
Dead cell: EthD-1
- ✓ 附positive Control
- ✓ 偵測方式-Microscopy 、 Plate reader



Human Foreskin Fibroblasts 以Saponin (cell death initiator) 處理細胞後加入Calcein AM和 EthD-1染劑分析細胞存活率

Product Name	Detection	Size	SKU
CytoSelect™ Cell Viability and Cytotoxicity Assay Kit	Colorimetric / Fluorometric	96 Assays	CBA-240

Nuclear/Cytosolic Fractionation Kit

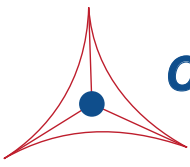


- ✓ 萃取哺乳動物細胞質和細胞核的蛋白
- ✓ 操作簡單且快速，2小時完成萃取步驟

萃取 Human Embryonic Kidney 293 cell 核質蛋白後偵測 Anti-α-Tubulin (cytosol-specific protein) 和 Anti-Lamin A/C (nuclear-specific protein) 表現量。Whole cell (W), cytosol (C), nuclear (N) fractions

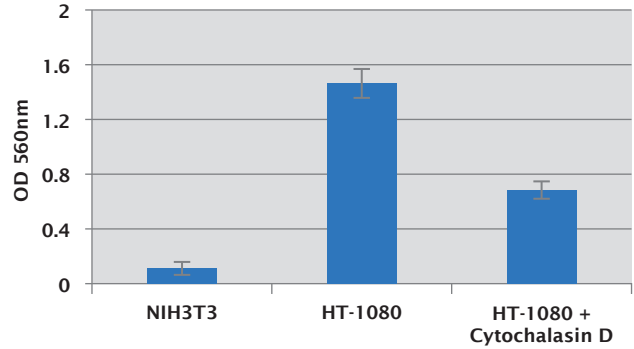
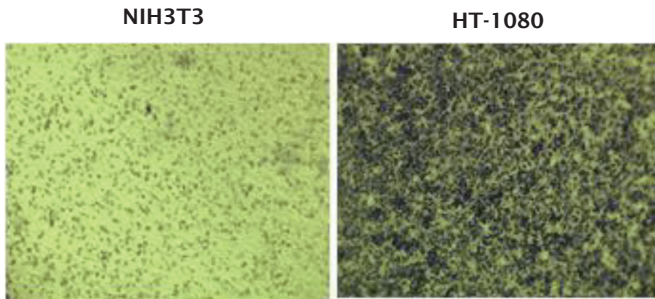
Product Name	Size	SKU
Nuclear/Cytosolic Fractionation Kit	20 test	AKR-171
	100 test	AKR-172





CytoSelect™ Cell invasion Assay

- ✓ 三種ECM protein -Basement membrane、Collagen I、Laminin I
- ✓ 可定量-螢光及可見光2種定量方法
- ✓ Combo kit 一次完成migration/invasion assay

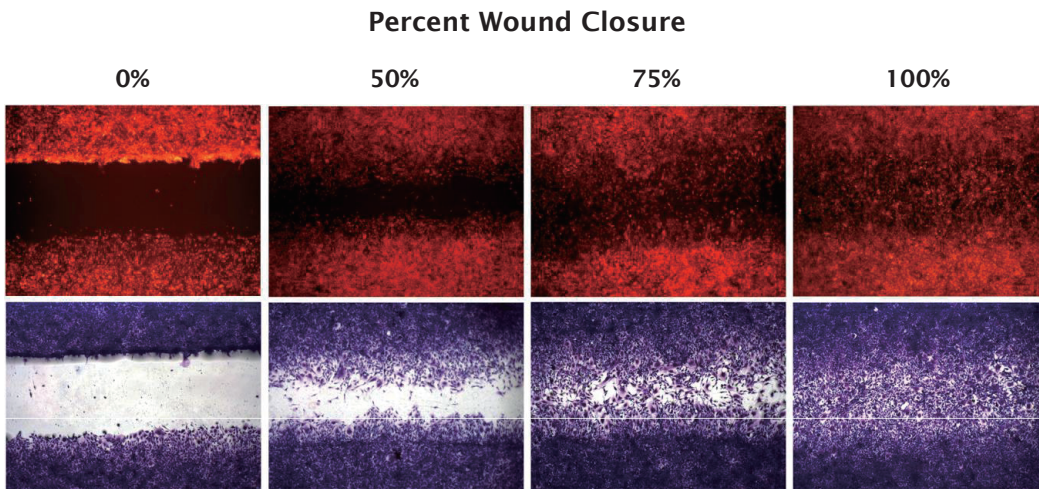


Human Fibrosarcoma HT-1080 和 NIH3T3 (negative control)加入 Cytochalasin D 處理後，經cell staining 和 extraction 步驟可定量 invasion cell

Product Name	Detection	Size	SKU
CytoSelect™ 24-Well Cell Invasion Assay, Basement Membrane	Colorimetric	12 Assays	CBA-110
	Fluorometric	12 Assays	CBA-111
CytoSelect™ 24-Well Cell Invasion Assay, Collagen I	Colorimetric	12 Assays	CBA-110-COL
	Fluorometric	12 Assays	CBA-111-COL
CytoSelect™ 24-Well Cell Invasion Assay, Laminin I	Colorimetric	12 Assays	CBA-110-LN
	Fluorometric	12 Assays	CBA-111-LN

CytoSelect™ 24-Well Wound Healing Assay

- ✓ 使用wound healing insert 讓wound field 更一致
- ✓ 可應用在cell migration、cell proliferation實驗
- ✓ Wound healing insert 不殘留任何會阻礙細胞爬行的基質



STO cell 經DAPI 染色後利用顯微鏡觀察wound closure 的現象

Product Name	Detection	Size	SKU
CytoSelect™ 24-Well Wound Healing Assay	Microscopy	24 Assays	CBA-120