



## 內行推薦

[www.bethyl.com](http://www.bethyl.com)

# IP/IHC/IFA 專業級抗體

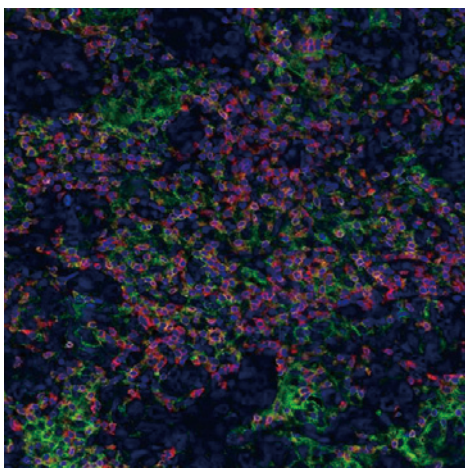
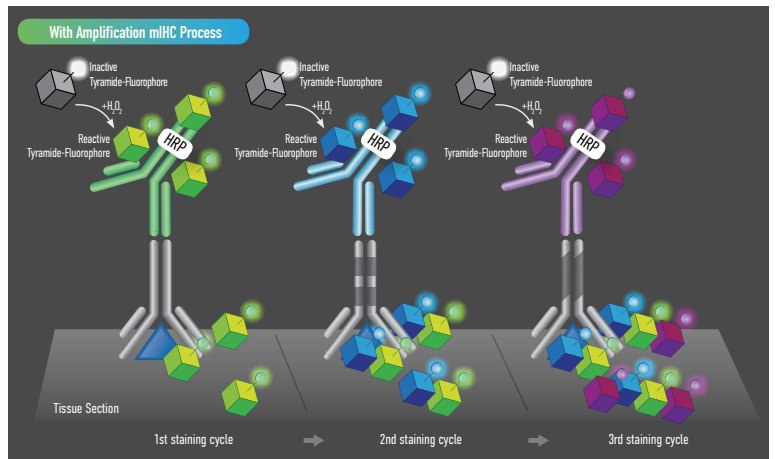
- 40年來堅持提供高品質抗體產品 (Made in U.S.A.)
  - 各式各樣的 Host species 及 Target reactivity
  - Conjugate 種類繁多 可供選擇 (HRP / AP / Biotin / PE / 各類螢光等等.....)
- 廣泛應用於 WB、IFA、IHC、ICC、ELISA



## Human IHC PathPlex™ Multiplex Antibody Panels 了解腫瘤微環境的最佳利器

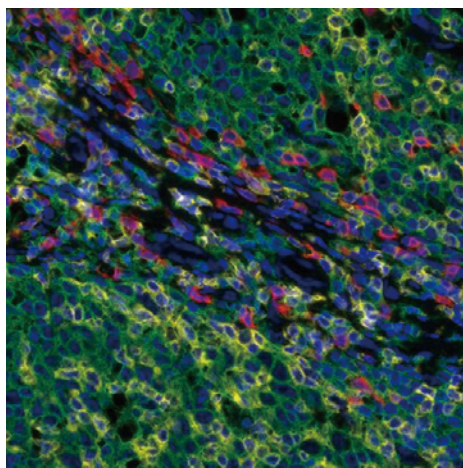
### 腫瘤微環境 (TME)

TME是惡性腫瘤和非惡性腫瘤細胞、訊號分子、胞外基質和血管的複合環境。抑制免疫檢查點和共同抑制分子，如：CTLA-4 和 PD-1 可用於免疫調節 TME 內的T細胞，是目前具前瞻性的癌症療法之一。而**多重免疫組織化學染色 (mIHC)** 可實現並同時追蹤 TME 內的多種標記，以預測治療的反應並找出新的治療靶點



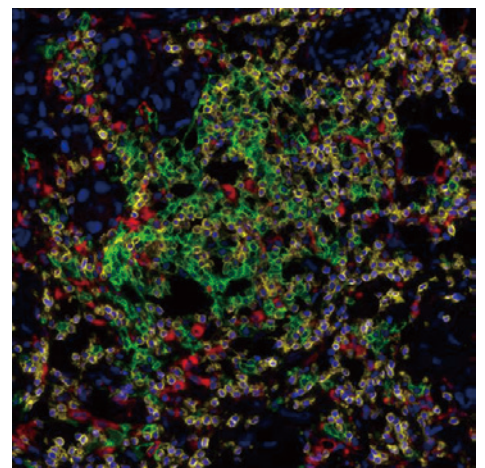
**T-Cell I/O Panel  
(#A810-001)**

CD3e (#A700-016; Orange)  
CD8 alpha (#A700-044; Red)  
PD-L1 (#A700-020; Green)  
DAPI (Counterstain Blue)



**Lymphocyte Panel  
(#A810-002)**

CD3e (#A700-016; Yellow)  
CD8 alpha (#A700-044; Red)  
CD20 (#A500-017A; Green)  
DAPI (Counterstain Blue)



**T, B & M Panel  
(#A810-003)**

CD3e (#A700-016; Yellow)  
CD68 (#A500-018A; Red)  
CD20 (#A500-017A; Green)  
DAPI (Counterstain Blue)