



# chemiSOLO

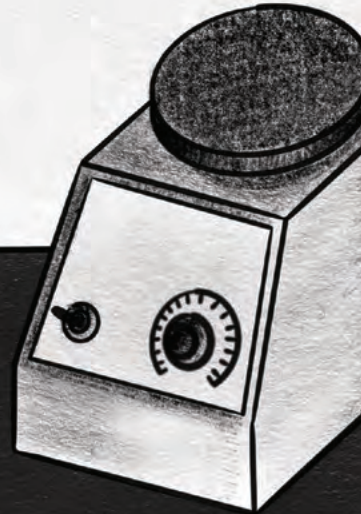
Personal Western Blot Imager



Discovering  
new boundaries

進階生物科技股份有限公司

服務專線：0800-251302



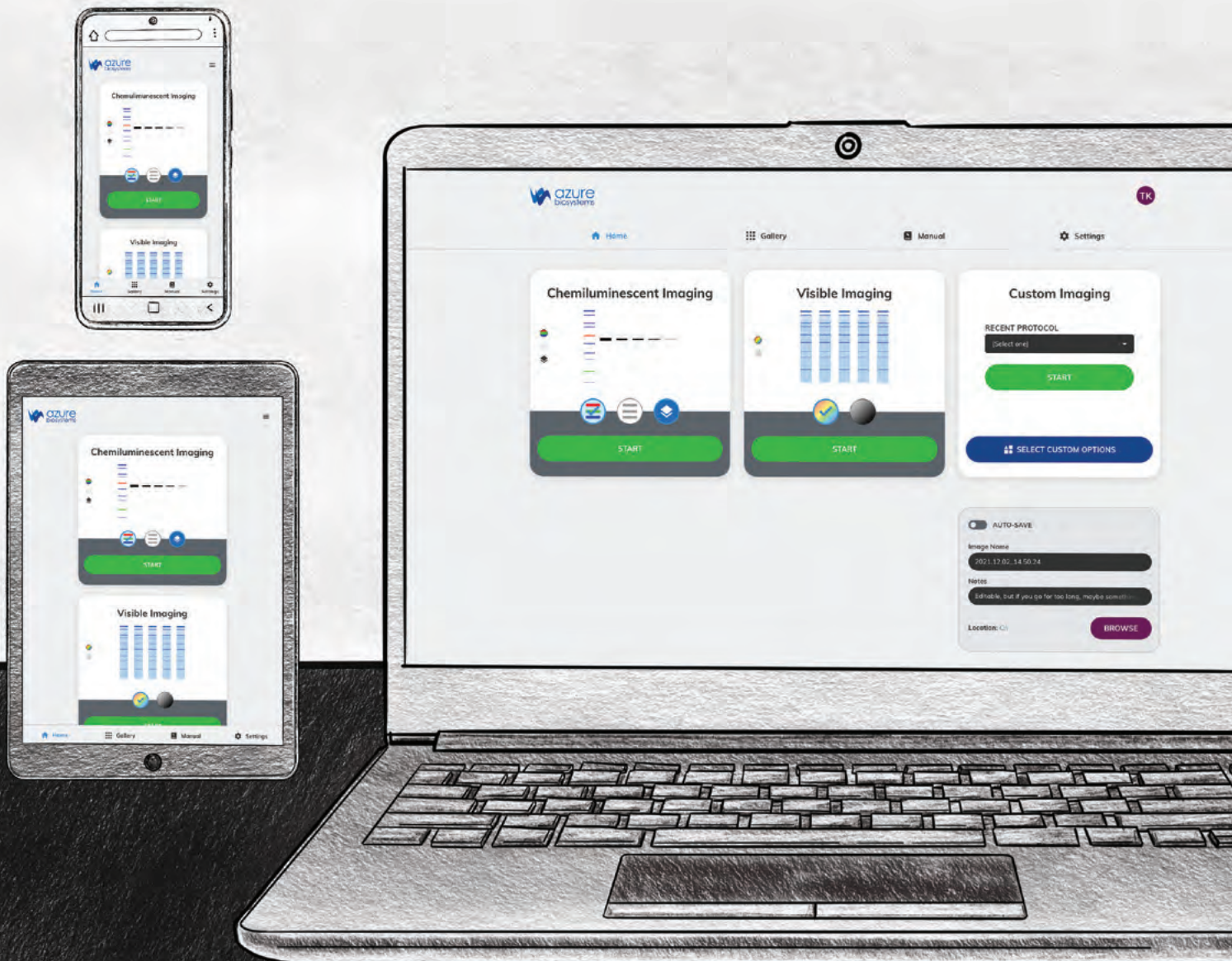
# Highly Sensitive Imaging

Femtogram detection of chemiluminescent Westerns



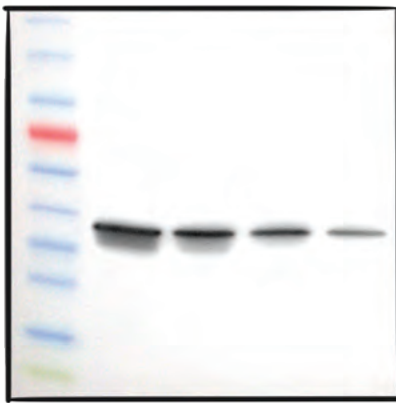
# Unique Software

Capture and download images instantly from any device.

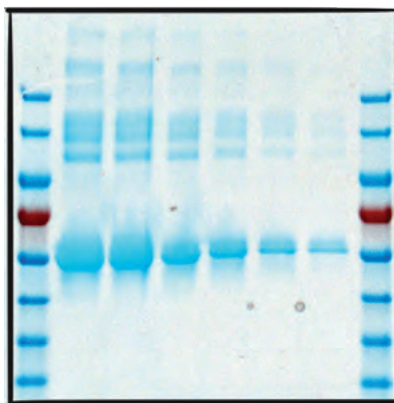


# Flexible Imaging Options

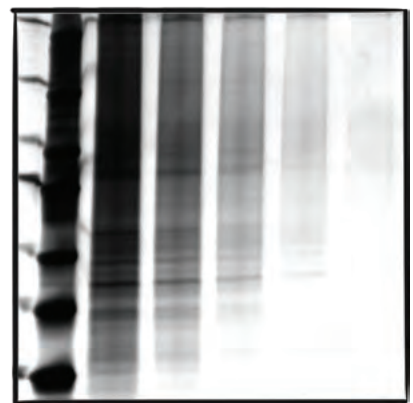
Chemiluminescent blots, colorimetric SDS PAGE gels, colorimetric blots, color marker, densitometry



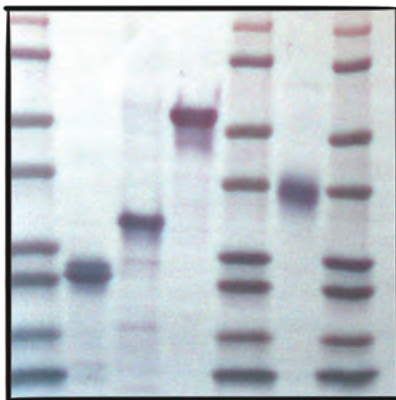
Chemiluminescent Blot with Color Marker



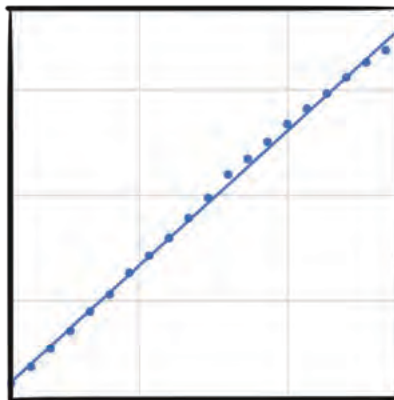
Coomassie Stained Protein Gel



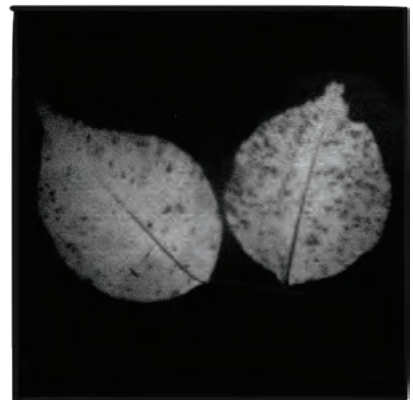
Silver Stained Protein Gel



Colorimetric Stained Blot



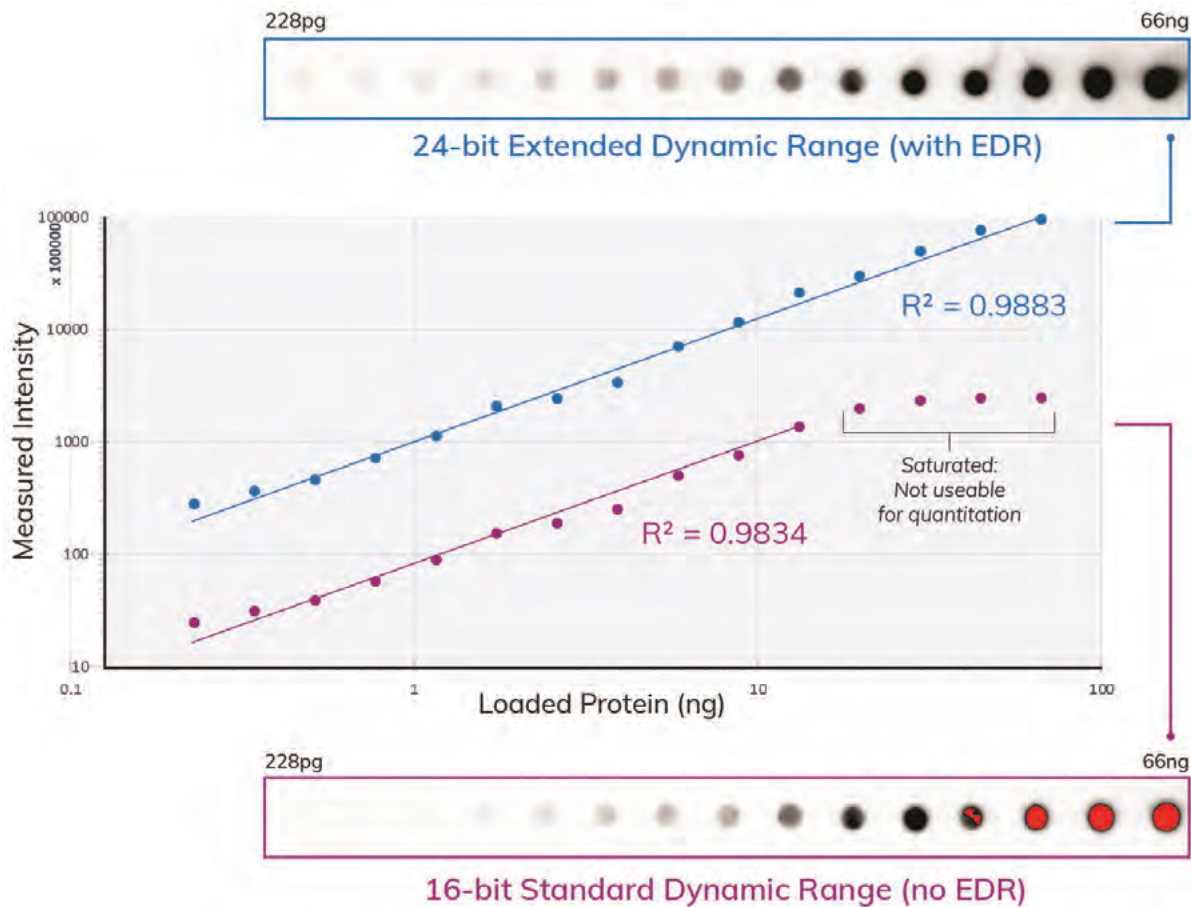
Densitometry



Plant Bioluminescence

# Quantitative Data Acquisition

chemiSOLO's Extended Dynamic Range linearly detects wider ranges without saturation.



Scan for more information on  
chemiSOLO's quantitative imaging



# Advanced Technology



## Embedded LEDs

Used for capturing marker and colorimetric gel images

## Two USB Ports

Used for Internet connection or direct data transfer

## One Ethernet Port

Used for direct connection via Ethernet cable

## Imaging Stage

Field of View: 10.0 x 15.0 cm (4.0 x 5.9 in)

## 6.29 MPx Camera

Powerful back-illuminated Peltier-cooled CMOS camera

## Browser-Based Software

Unique Wi-Fi signal allows the chemiSOLO to be controlled by any device with Wi-Fi connectivity and a browser

# Space-efficient Design

## Darkroom

At least 8 x 6ft



## Gel Tank and Power Supply

16.5 x 22 x 13in  
42 x 56 x 33cm

## chemiSOLO

11.5 x 17 x 8.75in  
29.2 x 43.2 x 22.2cm

## Microwave

22 x 15 x 18in  
56 x 38 x 45cm

chemiSOLO	Specifications
Part Number	CS1000
Camera	6.29MPx back-illuminated CMOS, 16-bit, 65,536 grayscale
Peltier Cooling	-40C regulated cooling from ambient
Applications	Chemiluminescent Imaging with Visible Marker, Densitometry, Visible Gel Imaging in Color and Grayscale
Light Source	LEDs
Field of View	10 x 15 cm (4.0 x 5.9 in)
Footprint (W x H x D)	29.2 x 22.2 x 43.2 cm (11.5 x 8.75 x 17.0 in)
Weight	9.1kg (20lbs)
Certifications	CE RED, cTUVus, CB scheme, RoHS

Scan for more information  
on the chemiSOLO



進階生物科技股份有限公司

台北總公司 02-26959935 免付費專線 0800251302 傳真 02-26958373  
 經銷商 榮陽長庚區·康寧 02-28200822 [www.level.com.tw](http://www.level.com.tw)



進階官網



FB粉絲團